

DF50

Auto Hematology Analyzer

Technical Specification

- Principles**
Impedance method for RBC and PLT counting
Cyanide free reagent for hemoglobin test
Flow Cytometry (FCM) + Tri-angle laser scatter method for WBC 5-part differential analysis and WBC counting
 - Parameters**
27 parameters: WBC, Lym%, Mon%, Neu%, Bas%, Eos%, Lym#, Mon#, Neu#, Eos#, Bas#, RBC, HGB, HCT, MCV, MCH, MCHC, RDW-CV, RDW-SD, PLT, MPV, PDW, PCT, LIC%, LIC#, ALY%, ALY#
3 histograms for WBC, RBC and PLT
3 DIFF scattergrams and 1 BASO scattergram
 - Reagent**
DIL-C Diluent, LYC-1 LYSE, LYC-2 LYSE, Probe Cleanser
 - Performance**
Parameter Linearity Range Precision Carryover
WBC $0-300 \times 10^9/L$ _2% ($4-15 \times 10^9/L$) _0.5%
RBC $0-8.5 \times 10^{12}/L$ _1.5% ($3.5-6.0 \times 10^{12}/L$) _0.5%
HGB 0-250g/L _1.5% (110-180g/L) _0.5%
PLT $0-3000 \times 10^9/L$ _4.0% ($100-500 \times 10^9/L$) _1.0%
 - Sample Volume**
Prediluted blood 20 μ L, Whole blood 15 μ L
 - Throughput**
60 samples per hour
 - Display**
10.4 inch TFT Touch Screen
- Multi-language**
Chinese, English available
Spanish, Portuguese, Russia, French under planning
 - Data Storage Capacity**
Up to 50,000 results including numeric and graphical
 - Communication**
LAN port supports HL7 protocol
 - Interface**
4 USB Ports, 1 LAN port
 - Printout**
External Laser printer / Inkjet printer, various printout formats and user-defined formats
 - Operating Environment**
Temperature: 10°C~30°C
Humidity: 20%~85%
 - Air pressure**
70 kPa~106 kPa
 - Power requirement**
100V-240V~; 50/60Hz
 - Dimension**
360mm(L) x 470mm(W) x 430mm(H)
 - Weight**
28KG

SMART 5-PART



DF50

Auto Hematology Analyzer



SHENZHEN DYMIND BIOTECHNOLOGY CO.,LTD.

Address: 2/F, Nanfeng Building B, Nanshan Yungu Innovation Industrial Park, No.1183, Liuxian Blvd, Taoyuan Street, Nanshan District, Shenzhen 518055, P.R.China

Tel: +86-755-26008015

E-mail: intl@dymind.com.cn

Fax: +86-755-26746162

Website: www.dymind.com.cn



DYMIND

www.dymind.com.cn

DF50

Auto Hematology Analyzer




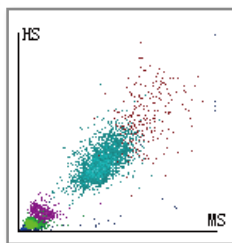
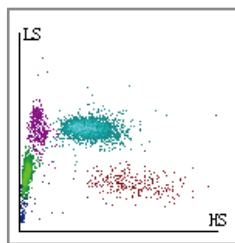
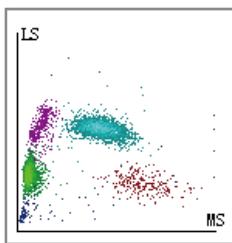
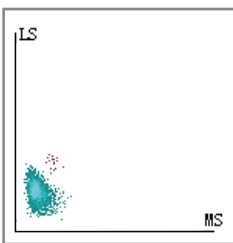
Features

- Tri-angle Laser scatter + Flow cytometry technology
- WBC 5-part differentiation, 23 reportable parameters and 4 research parameters, 3 histograms, 3 DIFF scattergrams and 1 BASO scattergram
- Double optical counting channel both for WBC and basophil measurement
- Whole blood mode, Capillary whole blood mode and Prediluted mode
- Powerful capability of flagging abnormal cells
- 10.4 inch large TFT touch screen with user-friendly software
- Large storage capacity: up to 50,000 samples
- Throughput: 60 samples per hour
- Low sample volume 15 μ L
- Compact in size
- High precision
- Good repeatability




15 μ L
ultra-low sample volume especially
suit for pediatric and geriatric samples

Read double optical channel
test, both for Diff and BASO. BASO
channel with optical counting,
more precise.



4 USB ports for data transmitting and connection with printer, keyboard, mouse, barcode scanner etc.



User friendly operation software.



4 reagent totally, 3 are routine use. Shelf life is 2 years.

All key components are imported, high quality and longer life. Syringe maintenance free.

- Valve from Japan
- Liquid pump from Germany
- Reliable component
- Long-life syringe
- Needle from Switzerland